

International Rescue Committee Thailand: Strategy Action Plan



P Biro / IRC

Issued June 2016



P. Biro / IRC

IRC2020 GLOBAL STRATEGY OVERVIEW

The International Rescue Committee's (IRC) mission is to help the world's most vulnerable people survive, recover, and gain control of their future. The aim of our global strategy, IRC2020 (see right), is to make measurable improvements in health, safety, education, economic wellbeing, and decision-making power. Therefore, the IRC has made investments to design more effective programs, use resources more efficiently, reach more people more quickly and better respond to beneficiaries' needs.



THAILAND OVERVIEW

Despite Thailand's overall stability over the last generation, there remain many population groups living in crisis. Communities displaced from Myanmar have been living in crowded refugee camps on the Thai-Myanmar border for over 20 years. In cities like Bangkok, refugees lack basic healthcare services. Work can be unsafe and wages are low.

Refugee women and girls are particularly at risk. Gender-based violence against women and girls

often occurs in refugee camps and urban areas. For pregnant women, physical and mental injuries lead to miscarriages, premature births and underweight newborns.

In addition to hosting refugees, Thailand has its own communities in need. In the south, villages are struggling to cope with ongoing instability and violence.

The IRC will continue to address these challenges through its extensive experience in both

camps and urban areas, expertise in maternal health, and partnerships with local and international organizations and government.

The IRC's new strategy for Thailand illustrates its commitment to improving the safety, health, and decision-making power of crisis-affected people in Thailand and southeast Myanmar.

IRC'S STRATEGIC PROGRAMMING

The IRC has deep roots in Thailand, with an established presence since 1975. Today, the IRC operates in Tak, Mae Hong Son, Ratchaburi, and Chiang Mai provinces, as well as Bangkok. The IRC supports individuals whose lives have been affected by conflict and disaster with legal aid, resettlement, healthcare and public health training. Through these programs, the IRC served over 150,000 people in Thailand in 2015 alone.

From now until the end of 2020, the IRC's strategy in Thailand will prioritize keeping people safe and healthy, and ensuring they have the power to make decisions about their lives (see Figure 1). The IRC will reach 70,000 people in Thailand by the end of 2020, specifically targeting conflict-affected people.

The IRC in Thailand will ensure the safety of conflict-affected people through legal assistance and protection programs. Through partner

organizations, the IRC will also ensure returnees to Myanmar are safe.

The IRC will leverage its expertise and strong healthcare network to expand and improve care, with a special focus on keeping women and girls healthy.

In collaboration with partners, the IRC will ensure conflict-affected people have the information and skills to exercise power over where to live. The IRC in Thailand will expand projects to empower women and girls to make decisions at home and in their community. At home, these decisions will include when to marry, when to have children, and how to spend family money.

The IRC's commitment to gender equality strives for equal outcomes for women and girls, and men and boys. To narrow the gender gap, the IRC will incorporate gender-focused programming into all activities.

Figure 1: Priority Outcomes and Future Programs

	Priority Outcomes in Thailand	Future Programs
SAFETY	<ul style="list-style-type: none"> > People are safe in their homes and receive support when they experience harm > People are safe in their communities and receive support when they experience harm > Women and girls are equally safe from harm as men and boys where they live, learn, and work 	<ul style="list-style-type: none"> > Establish integrated case management with the IRC in Myanmar and other service providers to ensure returnee safety > Provide safe spaces for women and girls to learn about health and how to prevent early marriage and sexual violence
HEALTH	<ul style="list-style-type: none"> > Women and adolescent girls are protected from and treated for complications of pregnancy and childbirth 	<ul style="list-style-type: none"> > Offer quality reproductive healthcare services > Treat non-communicable diseases such as chronic malnutrition (stunting)
POWER	<ul style="list-style-type: none"> > Women and girls are equally able as men and boys to choose where to live, how to live and how they are governed > People are able to exercise free and informed choices about where to live 	<ul style="list-style-type: none"> > Support organizations that empower women to participate in decisions about how refugee camps are managed

COMMITMENTS FOR IMPACT

In order to maximize impact and achieve the priority outcomes, the IRC in Thailand is making new investments to improve program effectiveness, use resources more efficiently, react more quickly when crisis strikes, be more responsive to beneficiaries and partners, and expand program reach. The IRC made the following commitments to strengthen programming and improve the lives of the people it serves in Thailand.

Figure 2: Commitments to Ensure Impact



Effectiveness

- > Initiate an annual country program-wide “State-of-IRC Thailand” initiative to measure the achievement of priority outcomes (see Figure 1) and continuously improve program design and implementation



Best Use of Resources

- > Continue to maximize local talent to fill key positions that strengthen the IRC's contextual knowledge and network



Speed & Timeliness

- > Develop an emergency response plan for natural disasters to respond more quickly when crisis strikes



Responsiveness

- > Establish a gender equality mainstreaming process across all sectors to ensure programs and partners address the unique needs of women and girls



Scale & Reach

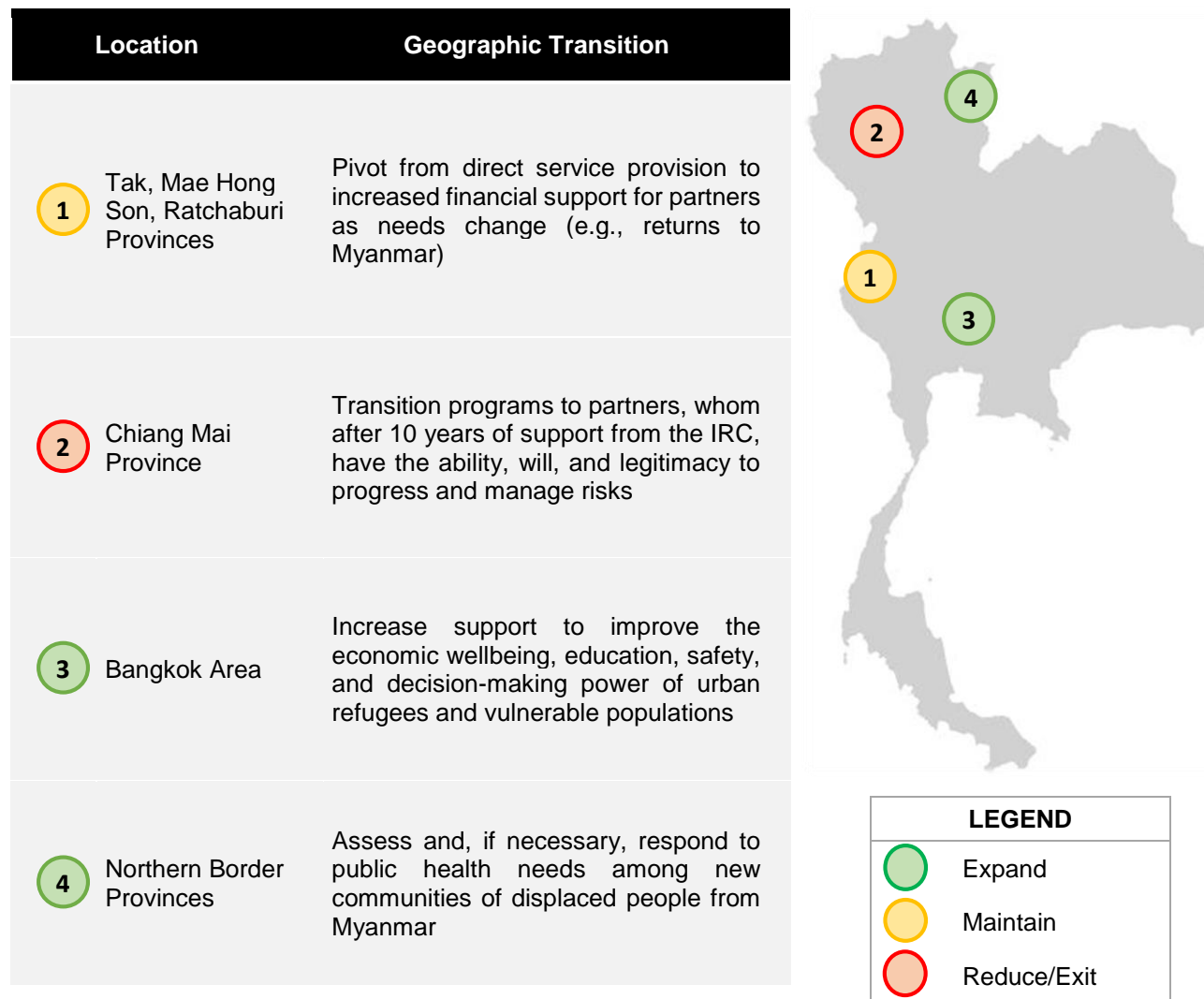
- > Launch a pilot project in a newly identified area of operation (see Figure 3) to reach individuals not currently served by the IRC
- > Increase private sector participation through corporate and social responsibility initiatives



IRC'S STRATEGIC PRESENCE

From now until the end of 2020, the IRC will maintain, expand, and close sites across Thailand based on an analysis of where the greatest need is and where the IRC can create the biggest impact.

Figure 3: The IRC's Geographic Transitions in Thailand





P. Biro / IRC

The IRC in Thailand

✉ Christine Petrie, Country Director
Christine.Petrie@rescue.org

🌐 [Rescue.org/where/Thailand](https://www.rescue.org/where/Thailand)



INTERNATIONAL
RESCUE
COMMITTEE